



SeoulTech – Business Administration (English Track)

National University in Seoul with 115 years of History



OVERVIEW

Founded in 

1910

Students 

11,800

Undergraduate

10,115

Graduate

1,685

* 包括8.1%的外国留学生

Faculty 

846

Full-time

393

Part-time

453

Admissions Unit 

• 31 departments in
7 colleges

• 71 majors in
7 graduate schools



Ranking

1st in **QS WUR By Subject** Engineering – Petroleum in Korea
1st among national universities in Korea (2024, Joongang Daily)

Colleges

8 Colleges

College of Engineering

College of Information and Communication Engineering

College of Energy and Biotechnology

College of Art & Design

College of Humanities & Social Sciences

College of Business and Technology

College of Creativity and Convergence studies

International College

Graduate Schools

1 General, 3 Professional

General Graduate School

Professional Graduate Schools

- Railway
- Public Policy & Information Technology
- Convergence Science

••••
ADMISSIONS UNIT

Colleges

8 Colleges

College of Engineering

College of Information and Communication Engineering

College of Energy and Biotechnology

College of Art & Design

College of Humanities & Social Sciences

College of Business and Technology

College of Creativity and Convergence studies

International College

Department of Business Administration

Business Administration

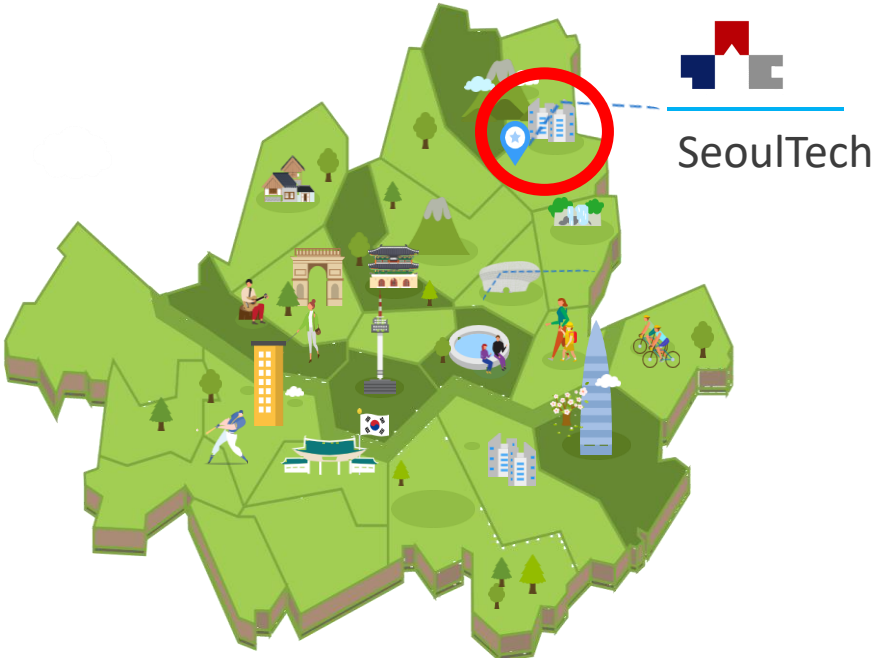
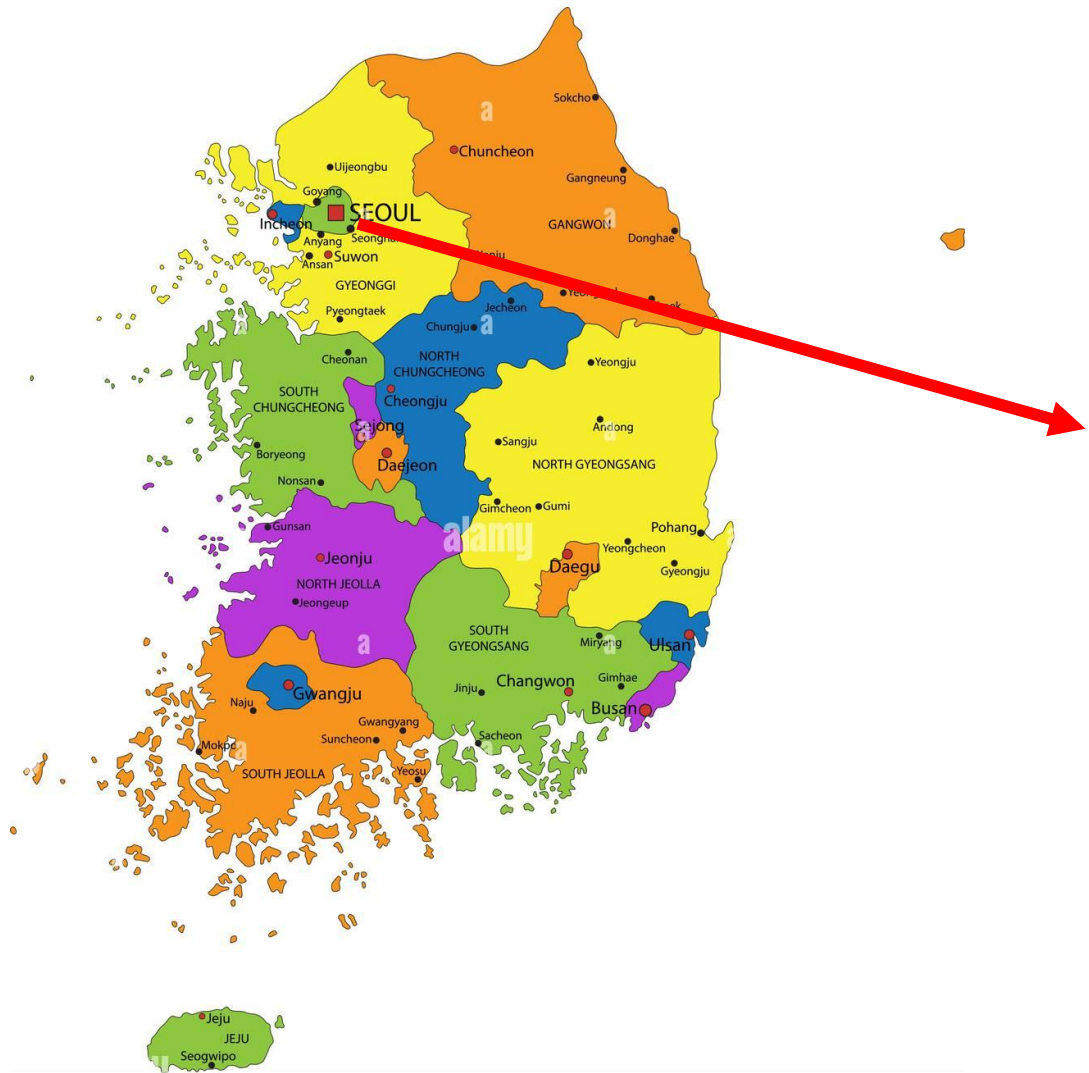
Asian Management Studies

(International Applicants Only,
Korean Language Required)

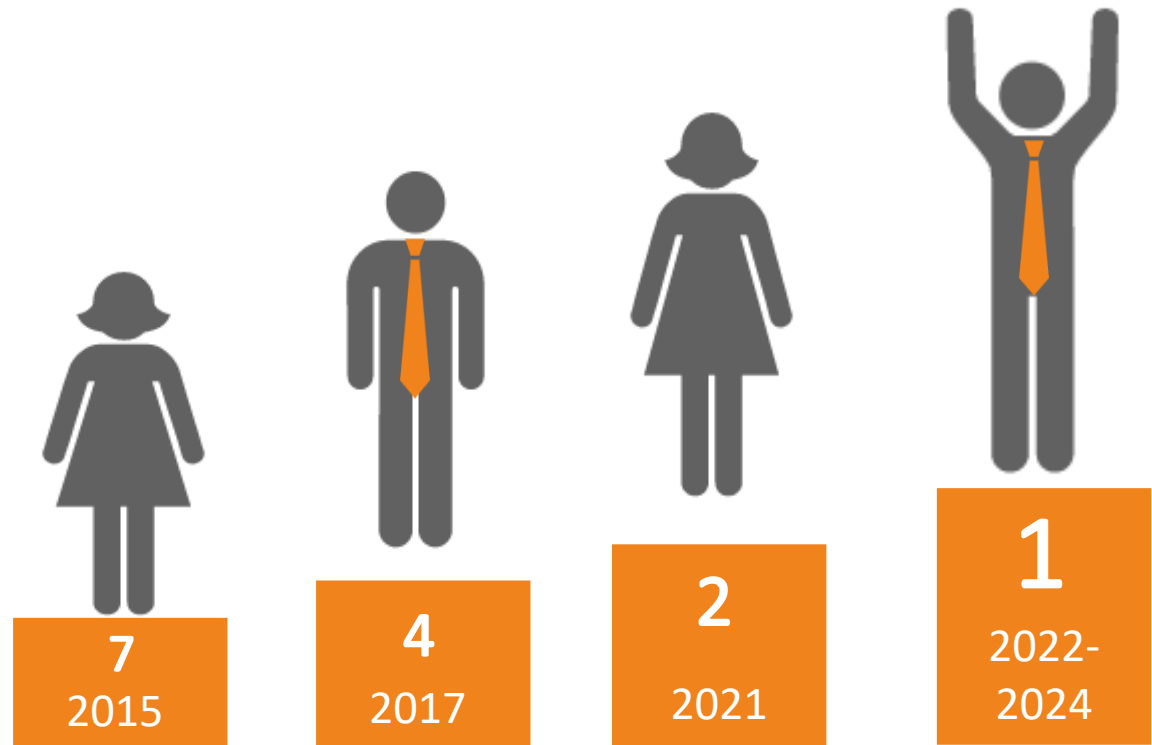
Business Administration-English Track

(For International Students, English Proficiency Required,
No Korean Language Requirement)

Located in Seoul



Fast Growing University



Raking 1 among **national universities** in Korea

Spacious Campus





Why Business Administration – English Track?

Curriculum

Internship for everyone – Real-world experience built in

Finance

Accounting

Marketing

AI &
Business
Analytics

Entrepreneur
-ship

Human
Resource

All Courses in **English (no TOPIK required)**

****iBT : 71, IELTS : 5.5**

** Submission of English proficiency test scores is waived for applicants who have completed high school education in an English-speaking country.

Faculty



Prof. Jihae Suh
(Department Chair)



Prof. Hail Jung
(Finance)



Prof. Heekyung Lee
(Marketing)



Prof. Chaewon Lee
(Strategy, Entrepreneurship)



Tuition & Scholarships



Business(English Track)

\$2,500

(Tuition + Program fee=\$740)

VS

\$5,930

Y University


\$5,255

H University

\$1=1,350 KRW

Tuition & Scholarships

Admission Scholarship (offered by SeoulTech) 1-2 students

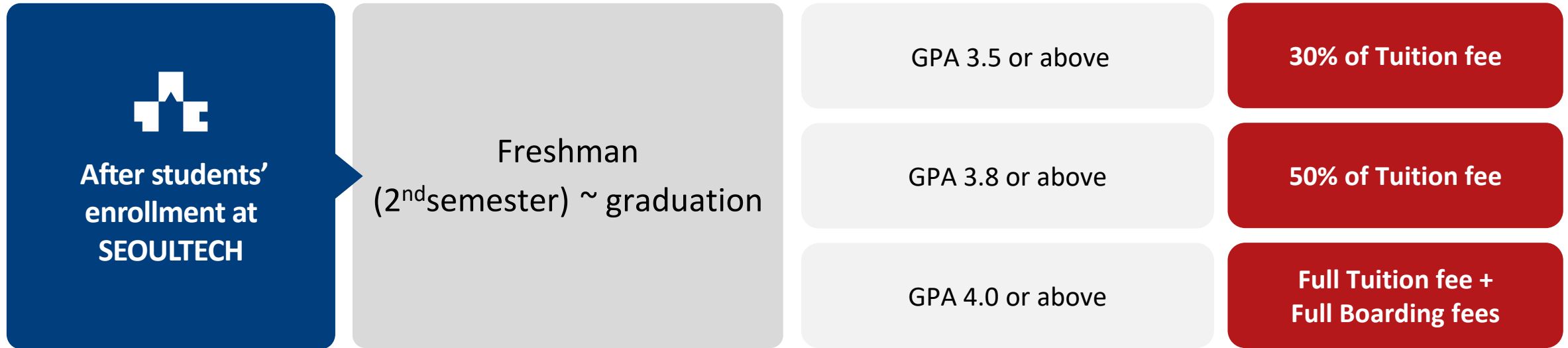
 Admission Scholarship For the 1 st semester only	Language	Application documents & Interview results	Scholarships
	. TOEFL iBT 80	Level B	50% of Tuition fee
	. TOEFL iBT 90	Level A	70% of Tuition fee
	. TOEFL iBT 100	Level B	70% of Tuition fee
		Level A	Full Tuition fee
. TOEFL iBT 100	Level B	Full Tuition fee	
	Level A	Full Tuition fee + Full Boarding fees	

In the Business Administration English Track, the tuition refers to the amount excluding the additional program fee of 1,000,000 KRW.

In cases where the English proficiency requirement is waived, scholarship eligibility will be determined through a holistic review of the applicant's high school transcripts, statement of study plan, and interview assessment.

Tuition & Scholarships

Merit-Based Scholarship (offered by SeoulTech)



- Must complete at least 12 credits without receiving an F grade
- Boarding fees is for quad (four beds) room, and will be provided except vacation time
- In the Business Administration English Track, the tuition refers to the amount excluding the additional program fee of 1,000,000 KRW.

Tuition & Scholarships

Special Scholarship (by Department of Business Administration)

Only for Business English Track students



Special Scholarship for
Business School
-English Track

For Freshman Only
(5 + students),
Spring 2026

For students who achieved
**excellent academic
performance in high school**

and impressed in the
interview

**Full Tuition +
Program fee
(=\$2,500)**

+ GPA-based Scholarship (2nd Semester onwards, offered by SeoulTech)

Accommodations

“Your new home awaits — international students first in line!”



Accommodations

6 modern-style buildings / Rooms for 2,600 students

Buildings only for International students (with shared Kitchen)

Dormitory fee (Unit : approx. USD per semester, 1 USD=1,350KRW)

Undergraduate

2-bed

\$602

4-bed

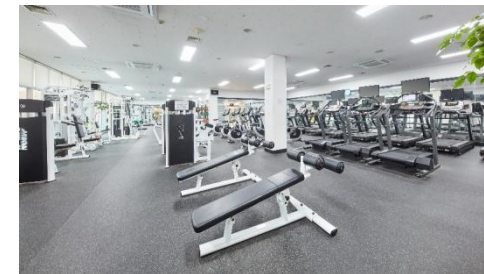
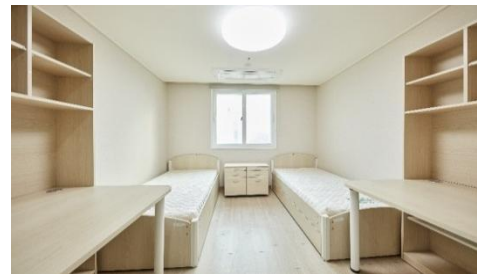
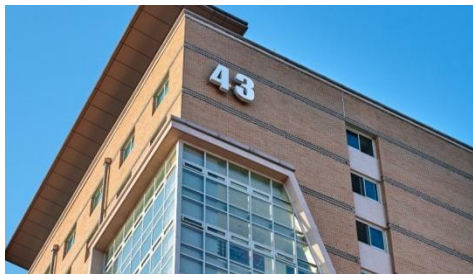
\$488

※ Meal options (per semester)

- 1meal \$342
- 2meals \$570
- 3meals \$808

※ International students may optout of the meal option

\$1 = 1,350 KRW



Internship for Everyone



Jeju Island – Shinwaha World



MICE (Meetings, Incentives,
Conferences, and Exhibitions) services

Internship for Everyone



Tax Company

Jungnang District Office
Nowan Office



Medical company
VSP PharmTech



Social Enterprise
LimeFreinds



Game developer
Lolozem

Innovation Clusters – Experiential Learning



Innovation Clusters – Experiential Learning



4. Quryon

"A search engine for consumer reviews content that bridges the gap between general search engines and consumer review aggregation sites."



Foundation	2015
CEO	Syng Yeup Lee
Location	Tips Town, Yeoksamdong, Kangnamgu, Seoul
Main Business	Big Data, Search engine for consumer reviews (Semantic Web)
Website	http://www.quryon.com/

Maker Space



Industry Field Trips



Cultural Experiences



Cultural Experiences



Buddy Program



- ▶ **Mentoring Buddy Program** (Country-specific buddies work in department)
 - Mentoring on campus life and academic matters
 - Buddies: Senior students

General Graduate School

Engineering

- Mechanical Design & Robot Engineering
- Mechanical Engineering
- Safety Engineering
- Mechanical Information Engineering
- Data Science
- Material Science & Engineering
- Automotive Engineering
- Civil Engineering
- Architectural Engineering Program.
- Architecture Program
- Electrical & Information Engineering
- Electronic Engineering
- Computer Science & Engineering
- Smart ICT Convergence Engineering
- MSDE
- Smart City Engineering
- Integrated IT Engineering
- Applied Artificial Intelligence
- Semiconductor Engineering
- Future Energy Convergence
- AI Business

Science

- Chemical & Biomolecular Engineering
- Environmental Engineering
- Food Science & Biotechnology
- Fine Chemistry

Art and Physical Education

- Industrial Design
- Visual Design
- Ceramic Arts & Design
- Metal Arts & Design
- Fine Arts
- Optometry
- Sports Science

Humanities and Social Science

- Business Administration
- TESOL
- Creative Writing

Professional Graduate School

Graduate School of Railway

- Railway System Engineering
- Railway Contraction and Policy



Graduate School of Public Policy & Information Technology

- AI and Public Policy
- Industrial Information Systems
- Media & Contents Policy
- Digital & Cultural Policy
- IT Designe Convergence



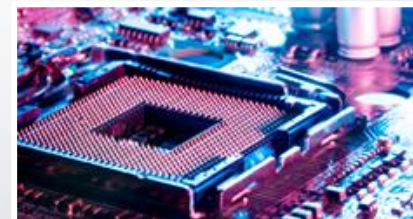
Graduate School of Defense Convergence Science

- Energy System Engineering
- Energy Policy
- Information Technology and Media Engineering



Graduate School of SeoulTech-KIRAMAS Medical Sciences

- Radiological & Medical Sciences
- Biomedical Sciences



International Student Success Stories

Ali('24) – Phnyx Lab – SW engineer



- Business Administration Major
- Computer Engineering Double Major
- GPA – 4.0
- Full Scholarship
- TOPIK Level 6

International Student Success Stories



Qu Di

- PhD student → Assistant Professor
- DaQing Normal University, China
- Financial Accounting Department



Jiang Enlu

- Humanities & Management Graduate → Assistant Professor
- Yancheng Institute of Technology, China
- Business Administration Department

••••

TIMELINE

	2025 Fall(2 nd Intake)	2026 Spring (Pre-admission)	2026 Spring (1 st Intake)	2026 Spring (2 nd Intake)
Pre-application	ANYTIME AVAILABLE			
Online Application	23(Mon)-27(Fri) Jun 2025	Jul 2025	Sep-Oct 2025	Dec 2025
Documents Submission	23(Mon)-27(Fri) Jun 2025	Jul 2025	Sep-Oct 2025	Dec 2025
Interview	Mid of July 2025	Jul 2025	TBA	TBA
Announcement	End of July 2025	Aug 2025	TBA	TBA
Korean Language	-	Sep 2025~	-	-
Semester Starts	1 Sep 2025	2 Mar 2026	2 Mar 2026	2 Mar 2026



CONTACT US

Inquiry Form



Take the Next Step with Us!

Whatsapp



UNIE

Instagram

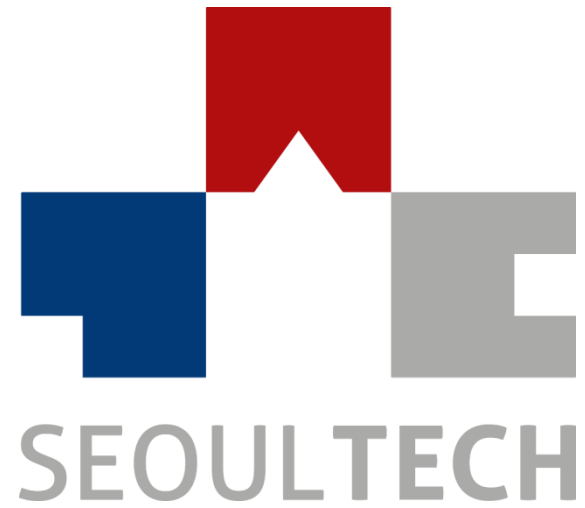


@seoultech_globaladmission



Email : stglobal@seoultech.ac.kr

Address : Room 906, Seoul Techno Park, Seoul National University of Science and Technology
232 Gongneung-ro, Nowon-gu, Seoul



Our Dream, Your Future

232 Gongneung-ro, Nowon-gu, Seoul, Republic of Korea, 01811
Tel: +82-2-970-9221~2 / Fax: +82-970-9229 / E-mail: oia@seoultech.ac.kr / Web: www.seoultech.ac.kr